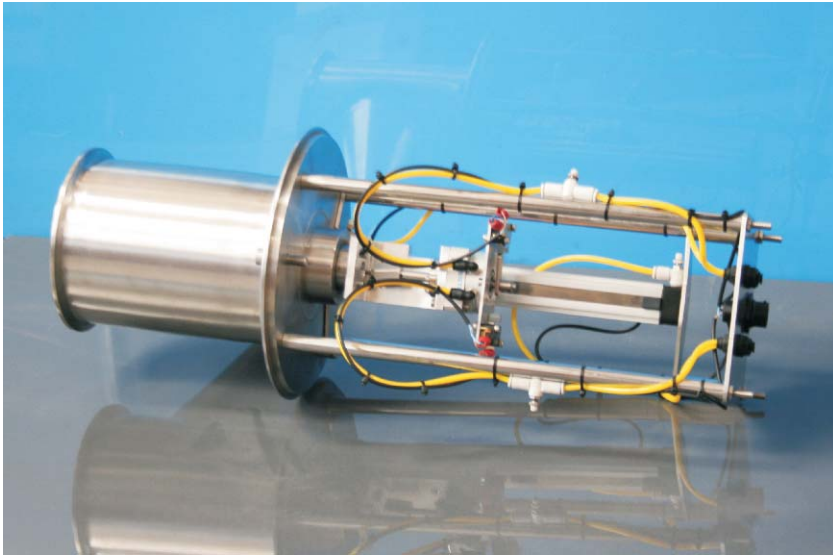
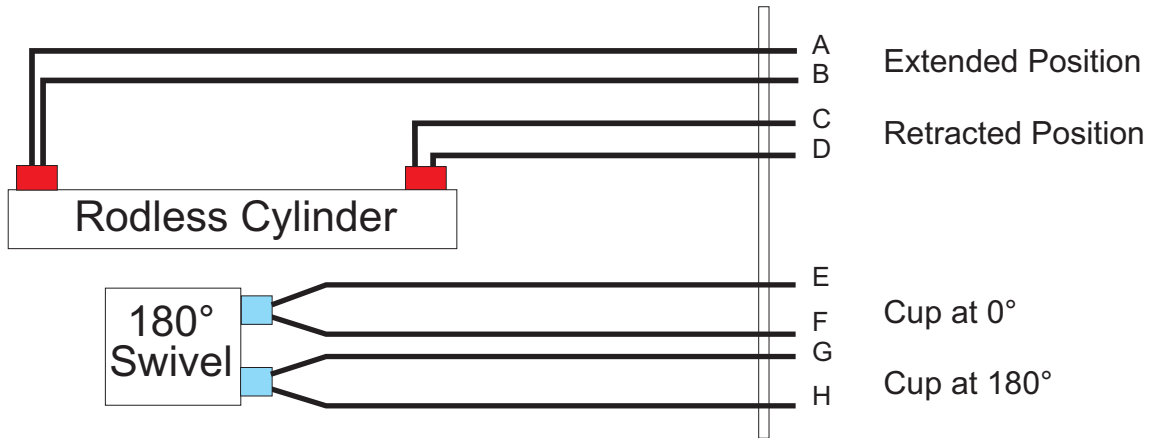


FreeGlide® Electrics



The FreeGlide® uses pneumatics to extend and retract the cup and to rotate it. Electrical sensors are used to monitor the position of the FreeGlide®.

The electrical sensors lead back to an 8 multiplug and socket.



Standard FreeGlide

- Sensors on Rodless Cylinder Origa KL3301
- Sensors on 180° swivel unit V3 Micro Switch

ATEX Rated FreeGlide

- Sensors on Rodless Cylinder Origa KL3250
- Sensors on 180° swivel unit Pepperl & Fuchs NJ2-V3-N0-V5 - ATEX

Incoming supply must be through a barrier.

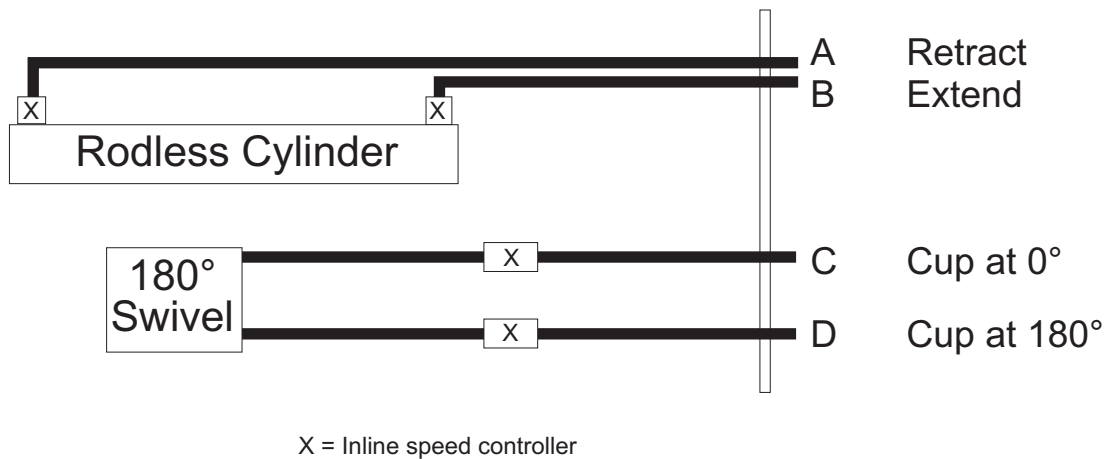
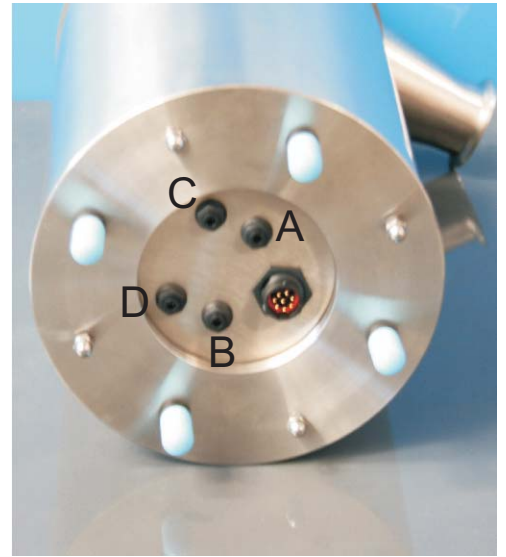
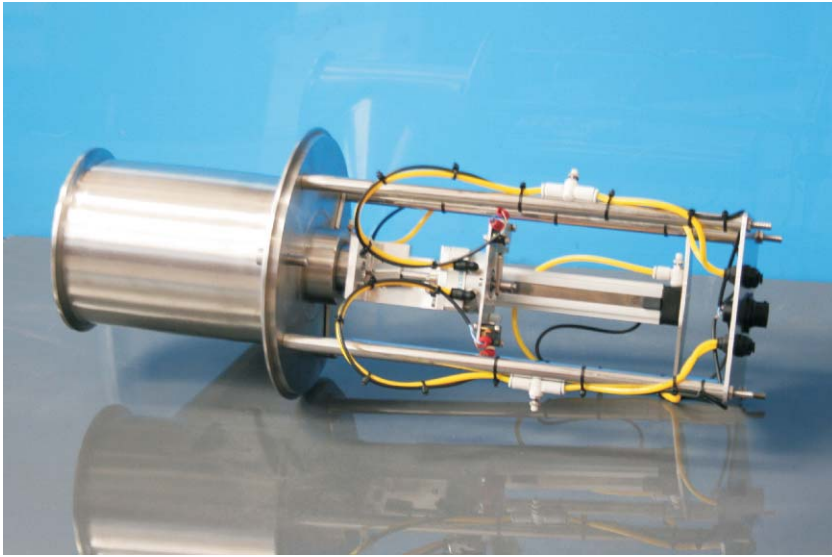
Installation Kit

The FreeGlide is supplied with an installation kit which comprises of:

- Multipin Plug
- 8 x soldering pins
- Instructions and wiring diagram



FreeGlide[®] Pneumatics



Tube Diameters				
	A	B	C	D
FG-1000A	4mm	4mm	4mm	4mm
FG-1500A	4mm	4mm	4mm	4mm
FG-2000A	4mm	4mm	4mm	4mm
FG-3000A	4mm	4mm	4mm	4mm

Incoming Air Supply 5 to 8 barg (75 to 115 psi) continuous

1 2 3 4 5 6 7 8 9 10 11 12 13 14 15 16

A

A

B

B

C

C

D

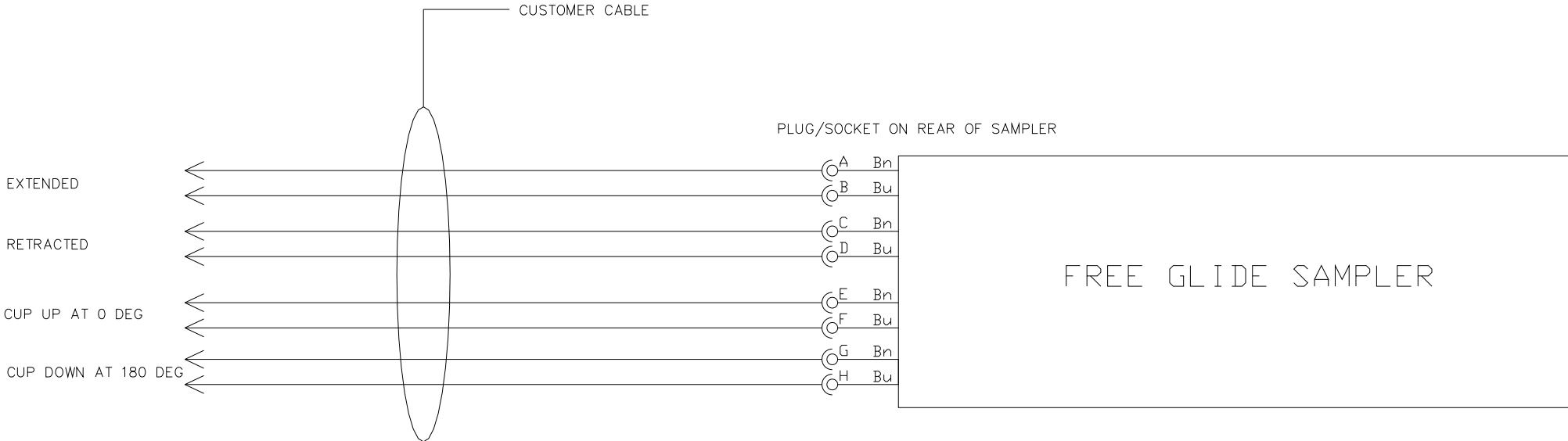
D

E

E

F

F



No 01	REVISION	DESCRIPTION	DRAWN	DATE	APPROVED	PROJECT - FREE GLIDE SAMPLER
SHEET 01 OF 01	0	ORIGINAL	J C	19/12/08		PROJECT NO - STD DWG
< >						DESCRIPTION - ELECT LINE DWG
CAD FILE NO SS 400 300						CUSTOMER -

SAMPLING SYSTEM

1 2 3 4 5 6 7 8 9 10 11 12 13 14 15 16